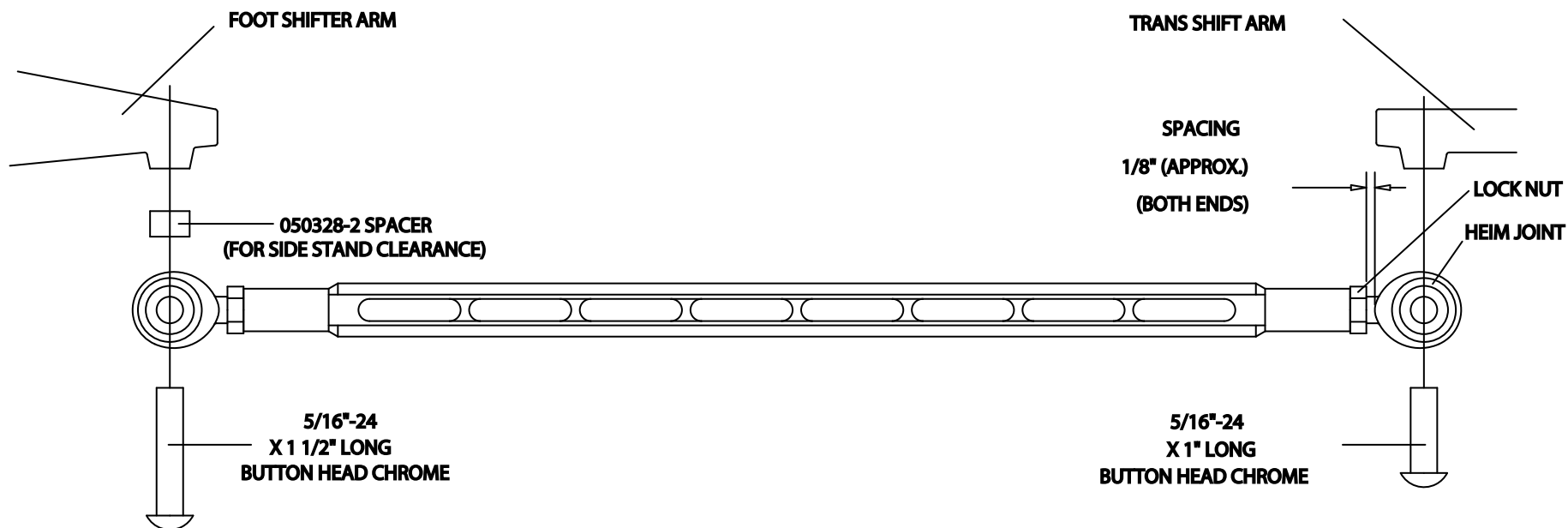


V-ROD SHIFT ROD ASSEMBLY



APPLY MILD STRENGTH LOC-TITE (BLUE) TO THE HEIM JOINT THREADS AND
TIGHTEN THE LOCK NUT IN THE POSITION SHOWN ABOVE

ATTACH THE ROD ASSEMBLY TO THE ARMS AS SHOWN ABOVE ALSO USING LOC-TITE
(BLUE) ON THE 5/16"-24 BUTTON HEAD SCREWS
(MAKE SURE THE STAINLESS STEEL SPACER IS IN PLACE ON FOOT SHIFTER ARM)


Joker
MACHINE
PH: (909) 613-0028
FX: (909) 613-0098
WWW.JOKERMACHINE.COM